

Lao Rehabilitation Foundation

HOUIXANG VILLAGE DRINKING WATER PROJECT

Namor District - Oudomxay Province - Lao PDR

1. Background

Houixang village located in Namor District in Oudomxay province is home to three distinct ethnic groups, Hmong, Khamou and Lao Houi people, each having their own identity, culture, traditions, costumes and languages. The village is located at 18 Km North of Namor and at 3 Km off Road 13. The population of 1,014 (535 women) is divided into 3 communities living at 600 to 800m apart.

	Ethnic Groups	Houses	Families	Population
1	Lao Houi	23	31	155
2	Hmong	89	102	602
3	Khamou	40	58	257
	TOTAL	152	191	1,014

The main activity is farming, slash/burn dry field and latex trees.
Education: there is one primary school (5 classrooms), 187 students.
Public health is administered by one volunteer health worker. There is no health care center in the village. There are no toilets in the village.





View of Lao Hui Houses



View of Hmong Houses



Lao Hui Child



Hmong Child



Khamou Child



Center of Village

2. Water

The Houixang river runs year long at a distance of 200m from each of the three communities. The river is used from North to South for a variety of purposes which renders it quite poluted. Villagers rely on a water spring located at 5km for drinking water.



Huixang River



Lao Hue children bringing water from river to their home



Drinking water



Hmong children bringing water from Houixang river to their home



3. Initial Survey (July 10, 2010)

Huixang river is fed by two springs, Huihin and Huixang.

Huihin spring is located at 7 Km from the village, at an elevation of 165m above the center of the village with a year long water flow of 0.5 L per second (43,200 L per day).

Huixang spring is located at 6 Km from the village, at an elevation of 60m above the center of the village with a year long water flow of 5 L per second (432,000 L per day).

Both springs are somewhat accessible by motorbike.



Pathway to spring location



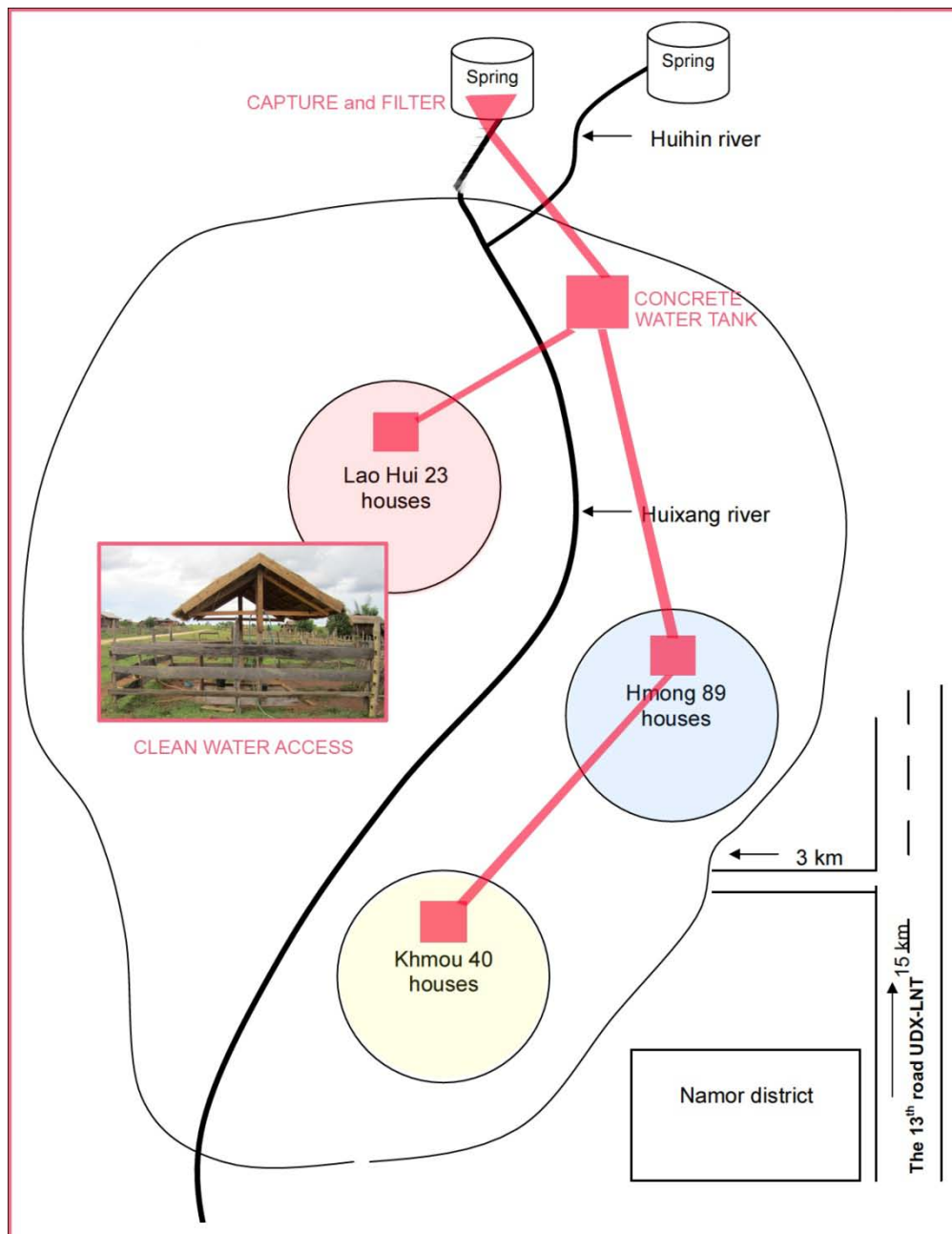
Elevations recorded by altimeter

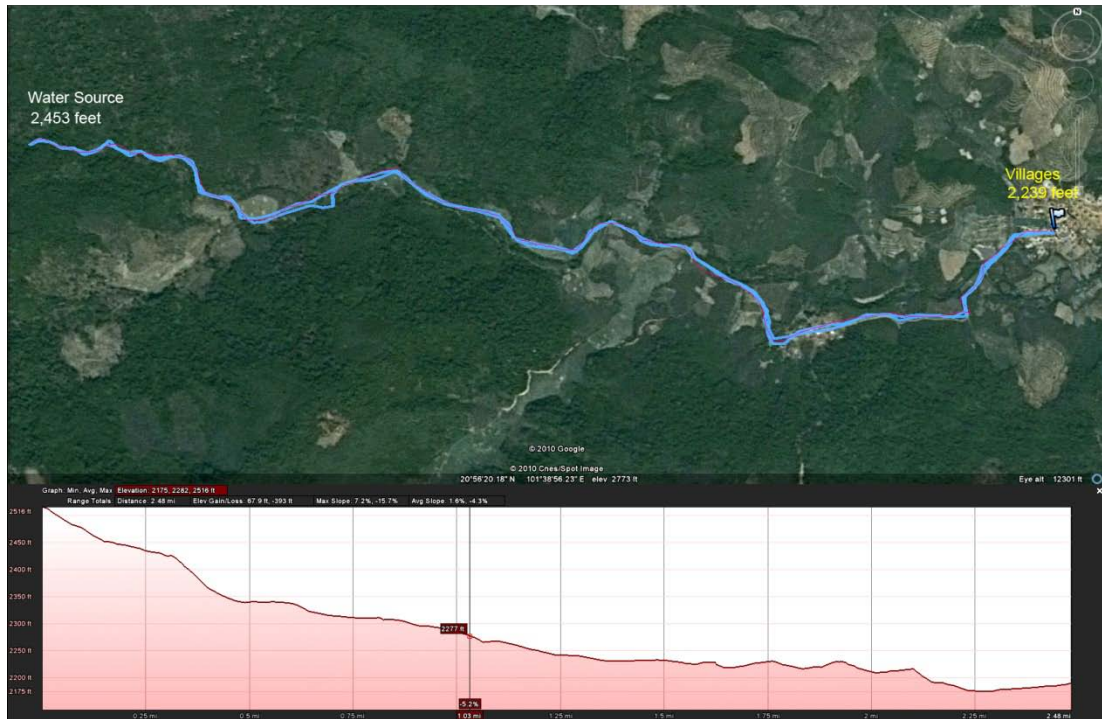


Namor Dept of Health Staff, Head of village, Dr. Phetsamone

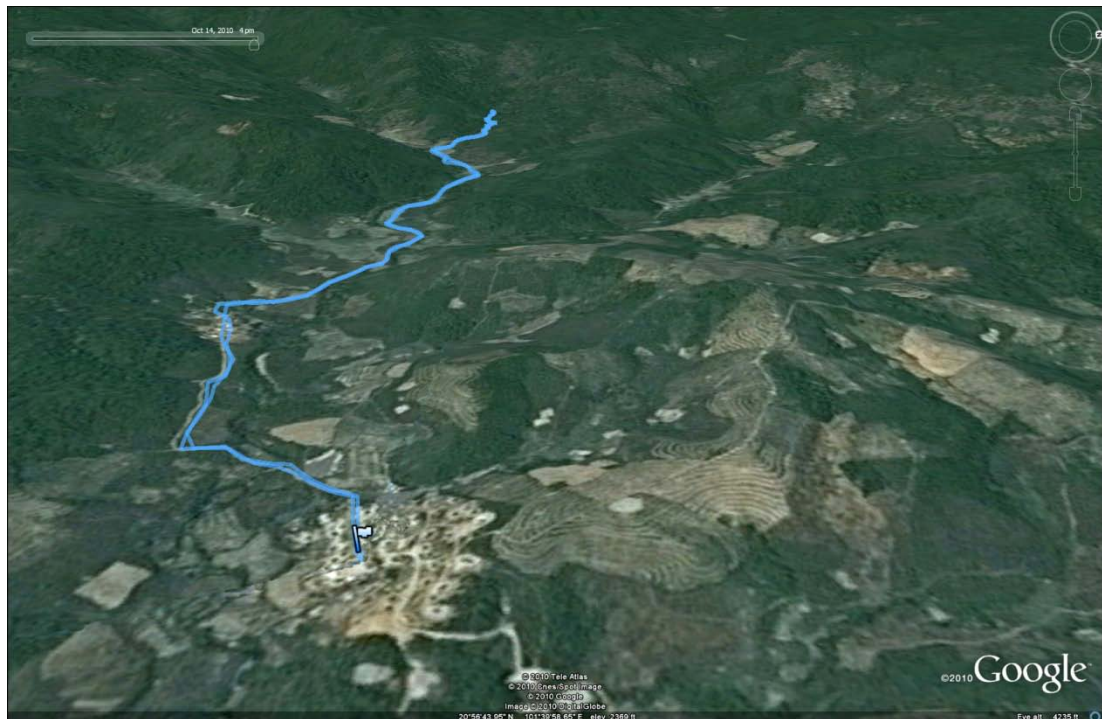
4. The Project

Although the river runs through the village providing ample water for irrigation, washing, etc., drinking water is only accessible at the springs. Capturing and filtering water at Huixang spring, then piping it to a concrete water tank above the village is feasible and sustainable. From the tank, drinking water can easily be made available at three locations in the village. Estimated cost \$35,000.00





GPS survey conducted in September 2010 showed a distance of 4 Km between the village center (right) and the Huixang water spring (left) and an elevation difference of 325 feet with no obstacle between the 2 points.





Water Spring





Life in the village